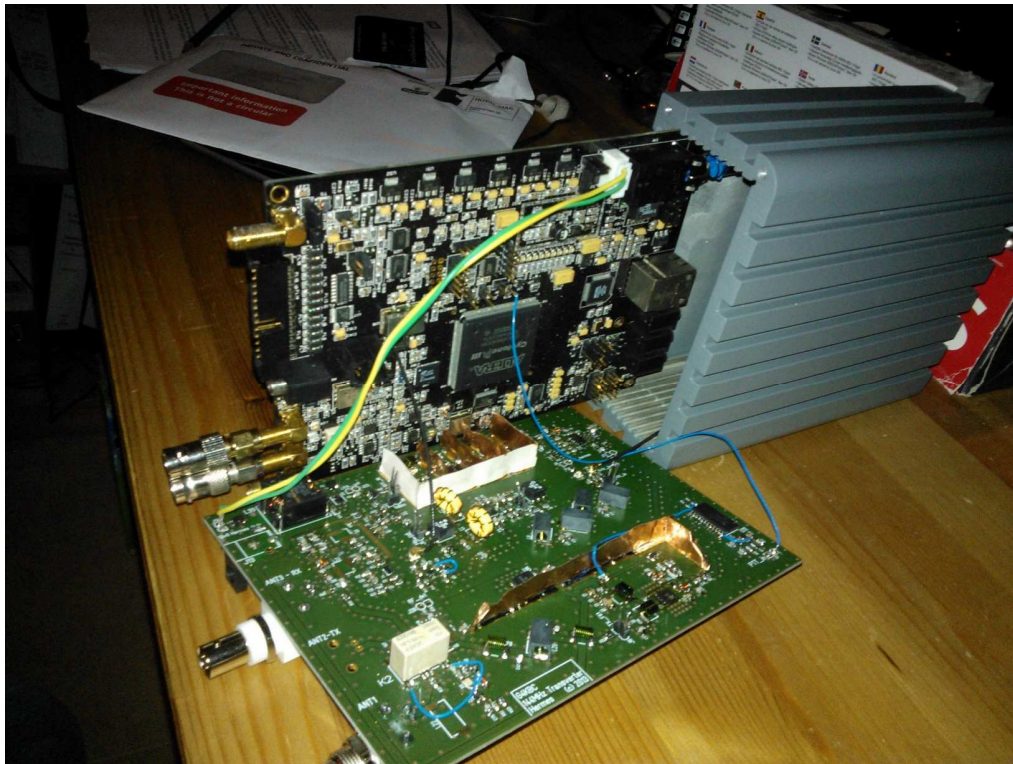
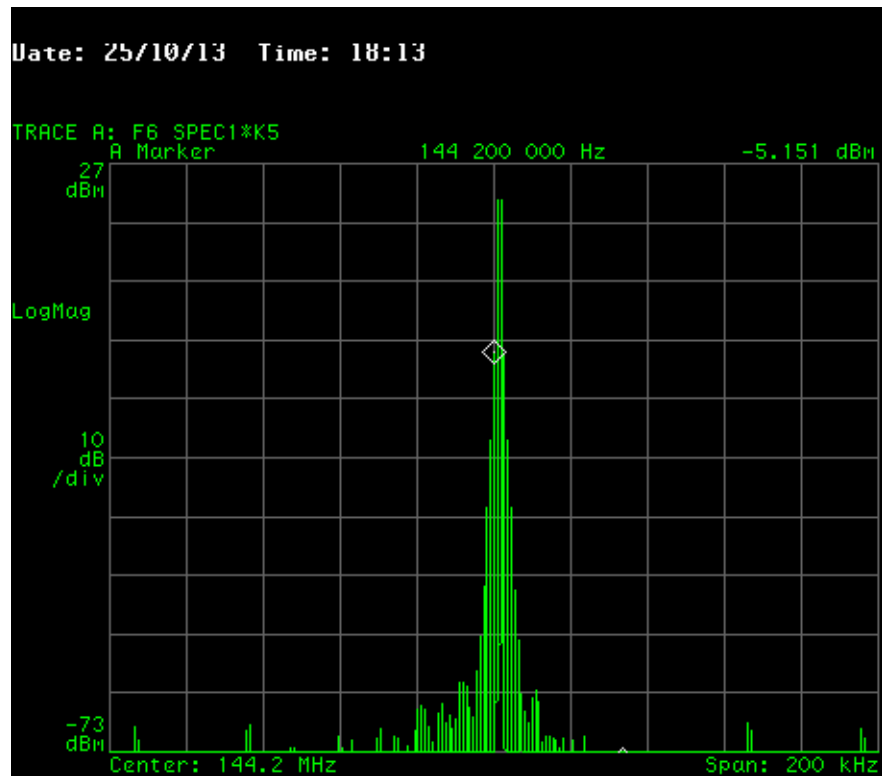


## Update on Hermes 144MHz

26.10.13





500mW PEP – 3<sup>rd</sup> order -32dB PEP, 9<sup>th</sup> -72dBc

drive	carrier dBm	IM3 dBm	IM3 dBc dB	PEP dBm	PEP mW
0	6.19	-36.5	42.69	12.2	17
1	9.18	-28.1	37.28	15.2	33
2	10.53	-24.6	35.13	16.5	45
3	12.94	-19.4	32.34	18.9	79
4					4
5	13.98	-17.5	31.48	20.0	100
6	14.85	-15.8	30.65	20.9	122
7	15.85	-14.92	30.77	21.9	154
9	16.39	-13.5	29.89	22.4	174
10	17.08	-12.25	29.33	23.1	204
12	17.7	-11.1	28.8	23.7	236
14	18.28	-10.1	28.38	24.3	269
17	18.8	-10.1	28.9	24.8	303
19	19.34	-8.25	27.59	25.3	344
22	19.8	-7.4	27.2	25.8	382
30	21.02	-5.06	26.08	27.0	506

Drive versus Po and 3IP